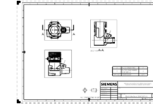


Assembly

block_TOP_REV_A
(directory)

Block Machined TOP REV-A.prt
All geometry internal (except bushing)

Block Machined DWG REV-A.prt



BlockBushing.prt
Bushing - Cast-in-place
2x
Linked body: 1mm body to match machined geometry
Position is relative to machined casing

Block AS CAST.prt
Useful as blank for CAM
Will become basis of patterns
Note: Is FIXED AT TIMESTAMP
Mostly done with:
Delete face
Replace face
Offset face

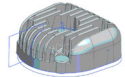
CAM Machining Operations

PART

SETUP COMPONENTS

BLANK

Cylinder Head



Casting models etc.

Block AS CAST SCALED 6PCT.prt
Basis for patterns and cores
bushing not scaled, spacing increased 6pct

Block - CORE 6pct.prt
Basis for 2 cores
bushing not scaled, spacing increased 6pct

Block Core - Part A

Block Core - Part B

Peers - Made with Copy

Core boxes...

Block - PATTERN master.prt
Core Prints offset by .25mm
Includes sketch for registration pins

Block - PATTERN LEFT.prt

Sand Casting Option

Peers - Made with Copy/edit

Block - PATTERN RIGHT.prt
.25mm Clearance added to pin cavity walls
1mm Height Clearance added to pin cavity

Block - LEFT Rubber Mold for Plaster Casting
Rubber Plaster Mold Casting

Block - RIGHT Rubber Mold for Plaster Casting
Rubber Plaster Mold Casting

