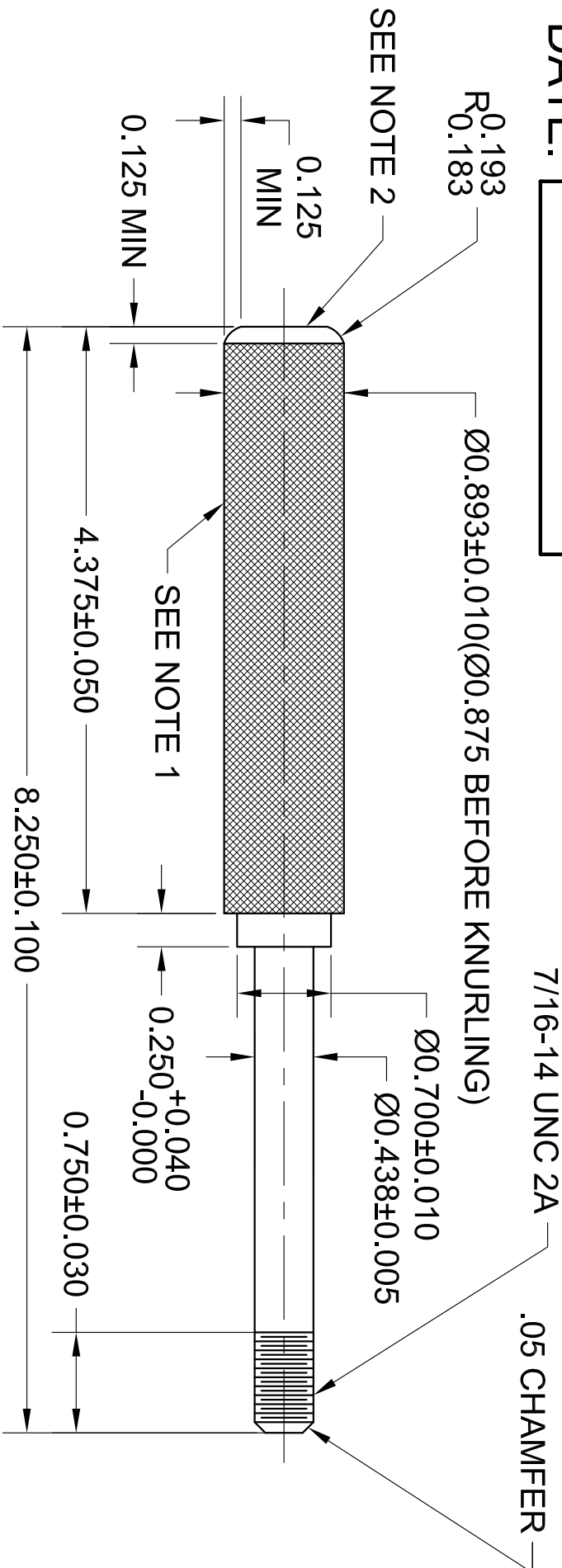


NAME:
 DATE:

GRADE:

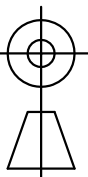
REVISION HISTORY			
REV	DESCRIPTION	DATE	APPROVED
A	ORIGINAL RELEASE	01/08/2019	



NOTE 1: MEDIUM DIAMOND KNURL, 20 TO 35 TPI
 NOTE 2: END MUST BE FACED COMPLETELY
 NOTE 3: SURFACE ROUGHNESS Ra 150 MICROINCHES MAX (EXCEPT KNURLS)

MATERIAL: 6061-T6511, ASTM B221-14

DIMENSIONING & TOLERANCING IN ACCORDANCE WITH ANSI/ASME Y14.5M - 1994



THIRD ANGLE

UNLESS OTHERWISE SPECIFIED: ALL DIMENSIONS ARE INCHES

UNSPECIFIED TOLERANCES

LENGTH	SURFACE FINISH
.0 = ±.1	RMS 140
.00 = ±.01	µin
.000 = ±.005	ANGULAR ±.25°
.0000 = ±.005	

UNIVERSITY OF MEMPHIS
 DEPARTMENT OF ENGINEERING TECHNOLOGY

HAMMER HANDLE - PART 2

SIZE	DATE	DWG NO	REV
Q	01-08-2019	UM001	A

SCALE: 1=1

DRAWN BY: RH

THIS DRAWING AND/OR SPECIFICATION CONTAINS INFORMATION THAT IS NOT CONFIDENTIAL TO THE UNIVERSITY OF MEMPHIS. BY RETENTION, THE RECIPIENT AGREES TO REPRODUCE OR COPY IT IN PART AND IN WHOLE WITHOUT WRITTEN PERMISSION, AND TO MAKE ANY USE OF IT AS SEEMS FITTING.