

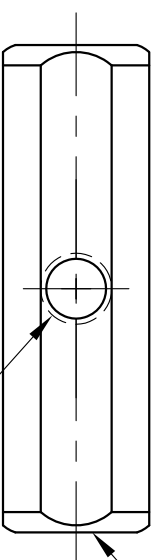
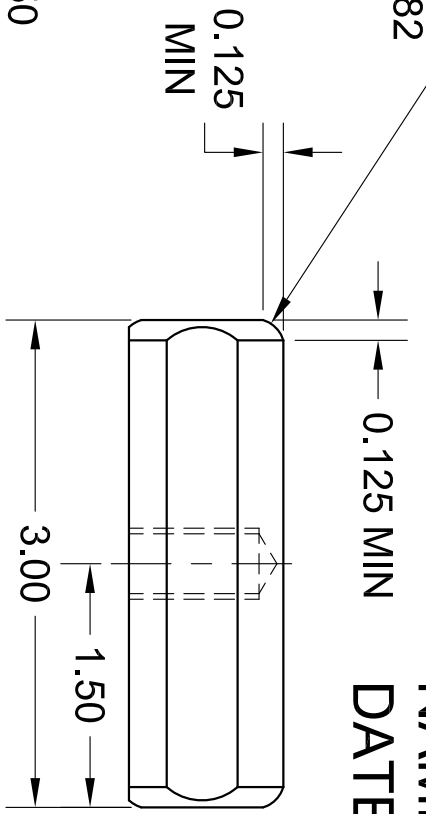
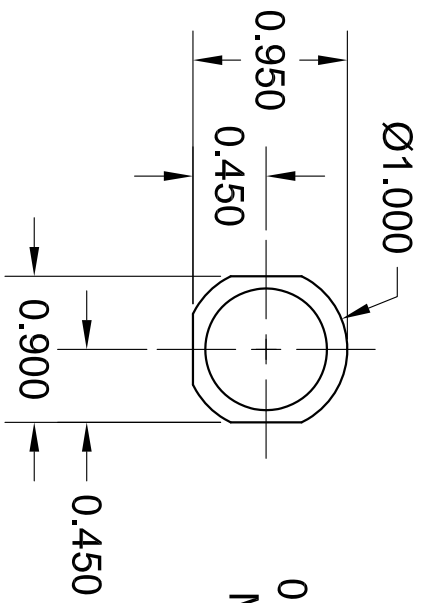
REVISION HISTORY			
REV	DESCRIPTION	DATE	APPROVED
A	ORIGINAL RELEASE	01/08/2019	

NOTE: RADIUS DETAIL TYP. BOTH ENDS

R0.192
R0.182

NAME:
DATE:

GRADE:



SEE NOTE 1

NOTE 1: BOTH ENDS MUST BE FACED COMPLETELY
NOTE 2: SURFACE ROUGHNESS Ra 200 MICRONS MAX

MATERIAL: UNS NO. C36000 ASTM B16-15
(BRASS ALLOY 360)

Ø0.438 ± 0.80
7/16-14 UNC 2B ± 0.75

DIMENSIONING & TOLERANCING IN ACCORDANCE WITH ANSI/ASME Y14.5M - 1994

THIRD ANGLE

UNLESS OTHERWISE SPECIFIED: ALL DIMENSIONS ARE INCHES

UNSPECIFIED TOLERANCES

THIS DRAWING AND/OR SPECIFICATION CONTAINS INFORMATION THAT IS NOT CONFIDENTIAL TO THE UNIVERSITY OF MEMPHIS. BY RETENTION, THE RECIPIENT AGREES TO REPRODUCE OR COPY IT IN PART AND IN WHOLE WITHOUT WRITTEN PERMISSION, AND TO MAKE ANY USE OF IT AS SEEMS FITTING.

LENGTH: .0 = ±.1
.00 = ±.01
.000 = ±.005

SURFACE FINISH: RMS 140 μin

ANGULAR ±.25°

UNIVERSITY OF MEMPHIS
DEPARTMENT OF ENGINEERING TECHNOLOGY

HAMMER HEAD

SIZE	DATE	DWG NO	REV
Q	01-08-2019	UM002	A
SCALE: 1=1		DRAWN BY: RH	